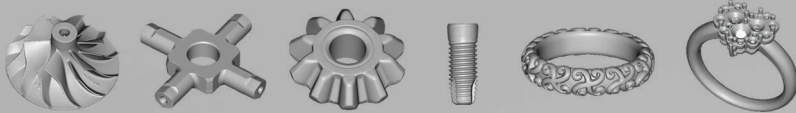


A GREAT OPPORTUNITY FOR SUCCESS

REXCQN DS³

MAKING 3D SCANNING A JOYFUL EXPERIENCE



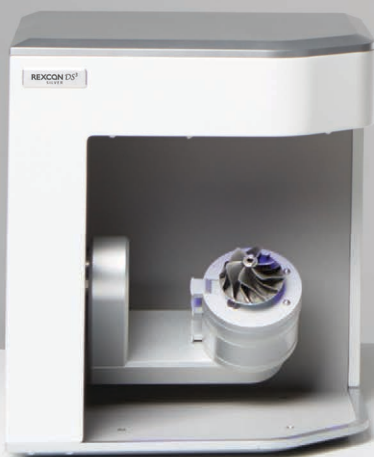
For Small and Detail Rich Object

Advanced Blue light Scanning Technology

An Intuitive Active Sync Function

Fast and Easy to use Scanning Process

REXCQN DS³ SILVER
1.3 Mega Pixel



REXCQN DS³ GOLD
5.0 Mega Pixel



MAKING 3D SCANNING A JOYFUL EXPERIENCE

REXCAN DS³

REXCAN DS³ offers the maximum level of precision and quality making 3D scanning a joyful experience.

Rexcan DS3 is the perfect solution for digitizing very small and detail rich objects. The fully automated scanning system with 'Advanced Blue Light Technology' provides the most precise and accurate data to users.

Key features



BLUE LIGHT TECHNOLOGY

Blue Light Technology that delivers superior data quality with improved scanning algorithms. The "Blue light scanner" makes scanning even faster and more precise than ever before.



I.M.V (INTELLIGENT MULTI VIEW) SCANNING

The new I.M.V scanning technology ensures the acquisition of high quality scan data, which makes scanning jobs more cost-efficient and increases productivity.



ACTIVE SYNC

A mouse click away for actively synchronizing the model and camera views, enabling users to recognize any scanning position and to add more scans where they may be needed.



OPEN AND SPACIOUS

The gold winner of International Design Excellent awards of 2014, The Rexcan DS3 has a fully open platform bringing the maximum in user convenience to 3D solutions.



OPEN SYSTEM

Able to export scanning data in the open STL format that works with any other open software.



Specification

Category	REXCAN DS ³ Gold	REXCAN DS ³ Silver
Camera Resolution	5.0 Mega Pixel	1.3 Mega Pixel
Scanning Area(FOV)	50mm, 120mm (Select one)	100mm
Dimension	320mm x 320mm x 370 mm	290mm x 290mm x 340mm
Weight	18kg	16 kg
Interface	USB 2.0 B Type, IEEE-1394B Type	USB 3.0 B Type
Power	AC 100~240V, 50~60 Hz	AC 100~240V, 50~60 Hz