

www.seceng.co.kr

ALPHA

Scanning Electron Microscope



sec
e-beam pioneer



User Friendly Interface Smart Tabletop SEM

ALPHA

Scanning Electron Microscope



NEW AND REDEFINED GRAPHIC INTERFACE

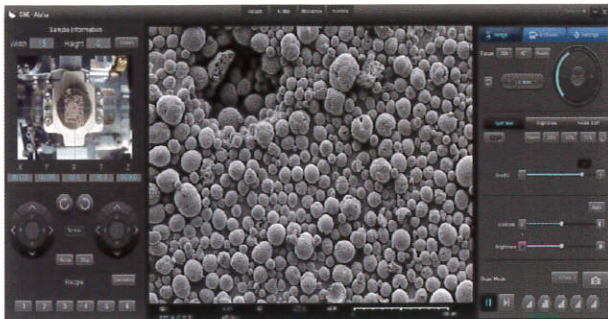
MAKE YOUR SAMPLE'S SURFACE INSPECTION EVEN BETTER

IMAGE STITCHING, 3D RENDERING, PARTICLE ANALYSIS

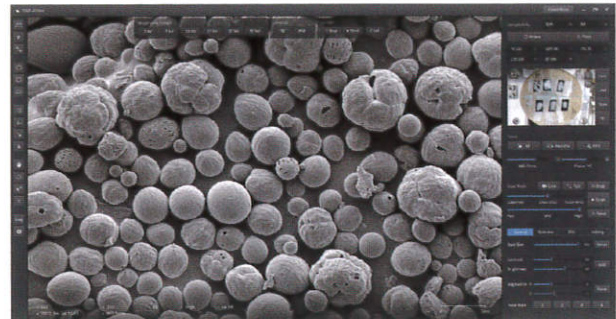
The most advanced and fully featured Tabletop SEM is now available, incorporating a fully motorized 5-axis stage with a navigation camera for easy sample positioning. The Alpha is the only tabletop SEM with a variable aperture providing similar resolution to full-size floor model systems with "live" magnifications up to x150,000. The EDS take-off angle has been improved from the prior model to an efficient 20-degree angle, further increasing the system's ability for elemental analysis.

New and redefined graphic user interface

The new GUI reinforces our commitment to our customers. To improve user experience and reliability, we renewed the overall UX/UI. Upgrades include broadening the FULL screen to SEC customers and allowing users to operate more interesting functions with more straightforward and intuitive icons.

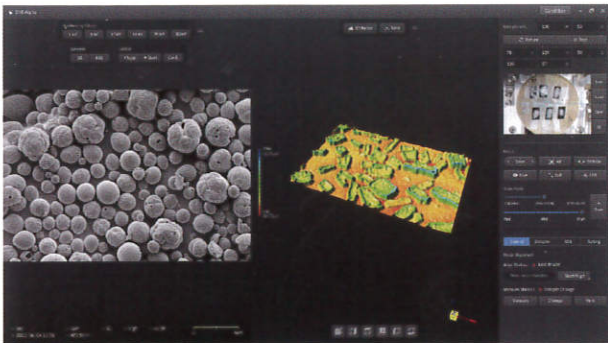


SNE-4500M Plus



NEW ALPHA

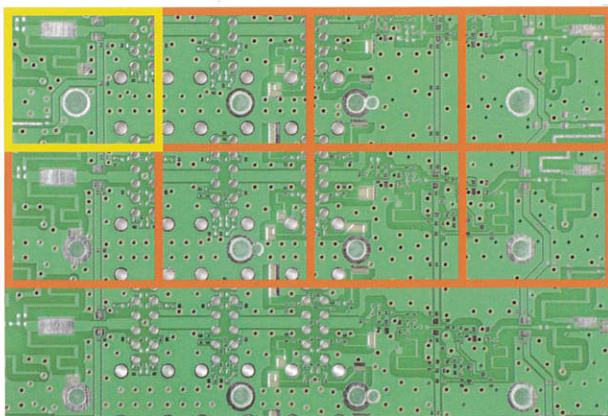
Make your sample's surface inspection even better





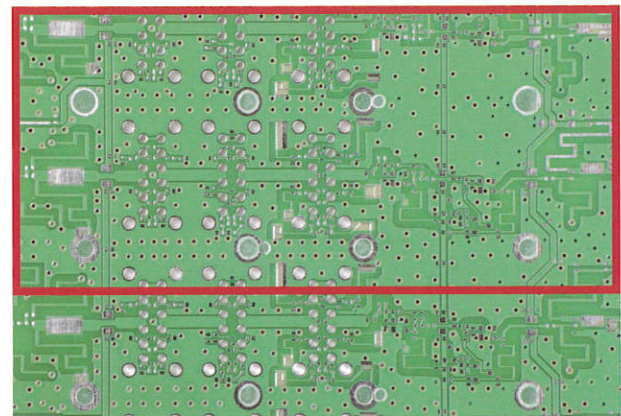
Our 3D rendering visualization is the best solution to check the roughness of surfaces. It is effortless to use and provides photorealistic visuals.

Stitch function

The motor stage with an error rate of 3um minimizes the overlapping area in a large-area scan so the user can shoot a more expansive area without image distortion.

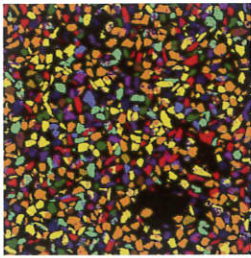


-  Yellow line : Conventional SEM imaging area (based on the lowest magnification)
-  Orange line : Auto image shooting & Compositing area

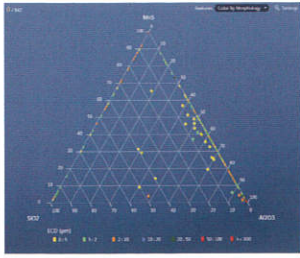


-  Red line : Panorama view, Mosaic view (Yellow + Orange line)

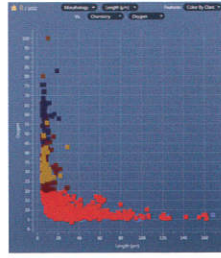
Particle Analysis (Particle Counting)



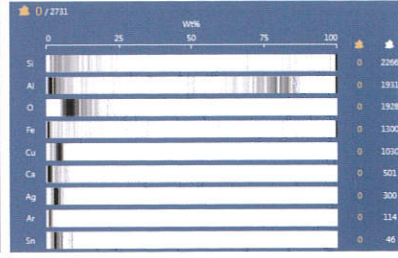
Classified Feature Image



Ternary Diagram



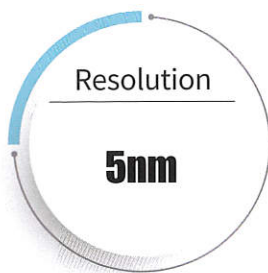
Scatter plot



Quant bars

Specifications

Resolution	5nm (SE, 30kv)
Magnification	20x~150,000x
Detectors	SE, BSE
Accelerating Voltage	1 / 5 / 10 / 15 / 20 / 30 kV 6 STEP
StageTravel	X: 40mm, Y: 40mm, R: 360°, Z: 0~40mm, T: -45~90° / 5-axis motorized stage
Demensions	300(W) × 465(D) × 605(H)mm
Options	EDS, Ion sputter coater, Raman, CL, EBIC, EBSD



SEC Coporate Headquarters

111, Saneop-ro 155beon-gil, Gwonseon-gu, Suwon, South Korea 16648
 Tel +82-31-215-7341 | Fax +82-31-215-7343 | E-mail secmaster@seceng.co.kr
www.seceng.co.kr/eng

SYNERGIE⁴

ZAC du Bois Chaland
 10 Rue du Bois Chaland
 91090 LISSES
 Tél. : 01 60 86 08 48

NanoImages

765 Moraga rd Lafayette, CA 94549
 Tel +1-866-556-5060 | Fax +1-925-231-1709 | E-mail info@nanoimages.com
www.nanoimages.com